



Smith Mountain Lake Chapter Antique & Classic Boat Society

Special Edition
An ACBS Member

November, 2015
Web Site: www.woodenboats.net

2015 BOAT SHOW SPECIAL EDITION



THANK YOU SPONSORS

With sincere appreciation from your friends & members of the Smith Mountain Lake Chapter

The Smith Mountain Lake Chapter of the Antique and Classic Boat Society wishes to thank our many sponsors and patrons who contributed generously to the success of our recent boat show. Their support helps us offset the cost of this event so we can keep it free to the public. They make it possible for us to contribute annually to many community charities.

PLATINUM SPONSOR:
Mariners Landing

GOLD SPONSORS:
Laker Media
WSLK Lake Radio 880

BRONZE SPONSORS:
Automatic Boat Covers
Berkshire Hathaway Home Services -
Carolyn Crabtree & Carolyn Pruett

Carilion Clinic
Duncan Ford
Hagerty Insurance
Sea Tow
SML Sail & Power Squadron
SML Water Safety Council
Wells Fargo Mortgage
Thomas Ulbrich

PATRONS:
Absolute Collision
All Seasons Marina

Alpaca by JACA
Antique Boat Center
Antique Mall at Mayberry
Artfully Framed
Audiology Hearing Aid Associates, Inc.
Berkshire Hathaway Home Services
Berkshire Hathaway Home Services
Eric Fansler
Tom Fansler
Bower Heating & Air Conditioning

Bridgewater Marina
Chopsticks Restaurant
Crazy Horse Marina
Chrystal Shores Marina
Duck In Market
Edo Grill
Gifts Ahoy
Gilbert, Bird & Weston, PC
Gills Creek Marina
Haywood Jewelry
Heath's Waterfront Grill
Homestead Creamery
Hometown Bank
Jakes Restaurant -
Blackwater Cafe
Lake Inn

La Trattoria Italian Restaurant
Log Homes by Jack Lowell Boats
Mexico Veijo Restaurant
Moneta Farm & Home Center
Parrot Cove Marina
Paul & Fran Strumph
Phil Hager Insurance
Plyler Homes & Docks
Premier Appraisals
Premier Stone
Print-n-Paper
Rocky Lake Wellness Center
Schlaginhausen Construction, Inc.
Smith Mountain Boat and Tackle

Smith Mountain Dock & Lodge
SML Animal Hospital
Smokehouse Restaurant
Sunken City Brewing Company
The General Store at SML
The Willard Companies
U-Haul/Magic Science Shop
Union Bank & Trust
Van Ness Engineering
Virginia Canvas
Webster Marine
Westlake Automotive
Westlake Golf & CC
Westlake Heating & Air Conditioning

2015 SML Boat Show Recap

Our 25th Anniversary antique boat show this past September was the largest show your club has ever hosted. We not only had our great local boats in attendance but also a large contingent of out of town boaters came in to make it a fantastic event. Crews from Keuka Lake (one of NYS finger lakes) Wine Country Chapter, ACBS, ventured down to see what the "Jewel of the Blue Ridge" was all about. We also had new boats from RDC chapter in North Carolina, a couple from the Chesapeake Chapter in eastern VA. plus a canoe group from MD.

The Friday activities, including a cruise of the dam and Witcher Creek areas was a great success as was the mid day buffet and evening social. Friday's weather was fantastic but Saturday morning started out with a few brief showers. The sun gods prevailed though and the remainder of the show day was rain free. The spectators had all our docks filled during the day and the show was a terrific event to say the least. We had a total of 60 boats on display, 78 people came to the Friday lunch, 133 came for the evening social, and 131 showed up for the award's banquet on Saturday evening after the show.

It's been a tradition for the Wine Country club to plan a fall cruise for many years to such destinations as Lake George, Muskoka Lakes in Canada, Lake Winnepesaukee in NH, etc. so I suggested that they make SML their 2015 destination. After our show, the Keuka lakers all jumped in their boats for a Sunday cruise on the Blackwater and a Monday cruise on the Roanoke. In addition to seeing some of the great sites our lake has to offer, we made stops at Smith's Lipizzan horse farm plus home and workshop tours of Alan and Jean Frederick, Bob Pennoyer, Art and Rosalie Cournoyer, Billy Garrecht, George and Joan Blosser, Mike and Dolores Mutchler, and Roger and Sybil Smith. In addition, we were able to have food stops at Mexican Viejo and Moosies. Needless to say, the sunny and warm days were packed full of adventures and a fine time was had by all.*

A huge amount of time and effort goes into making a great boat show each year and all members of the Smith Mountain Lake Chapter, ACBS, should give themselves a great pat on the back for a job well done. Plans are already underway for the 2016 show which will focus on the lake's 50th anniversary so don't miss the boat. See you next September at Mariners Landing.

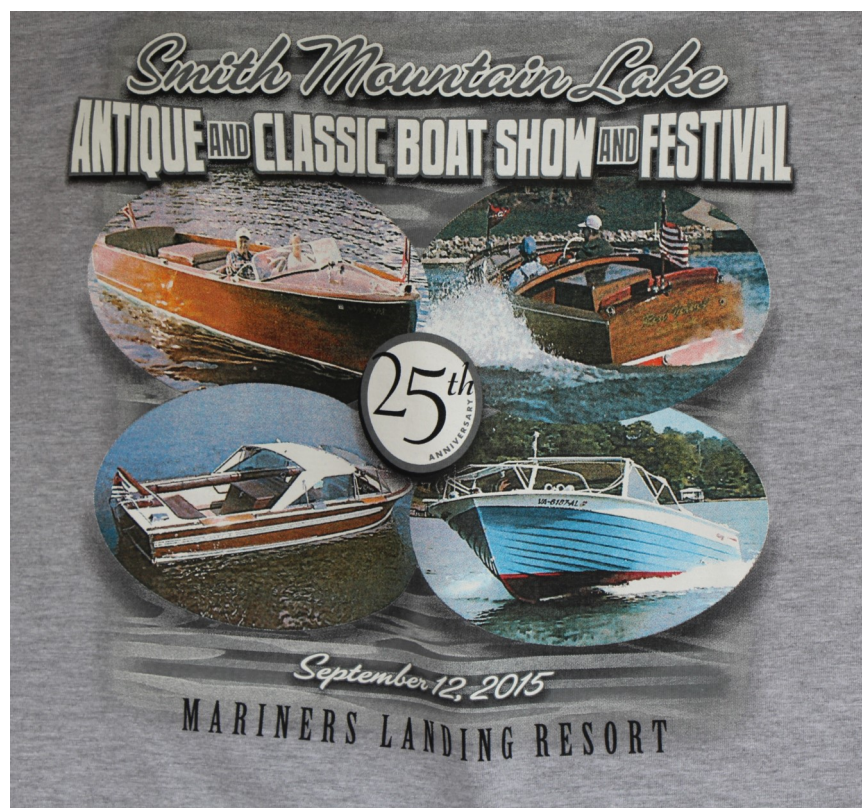
(Submitted by Alan Frederick, 2015 Boat Show Chairman)

*For a recap of the cruises by Doug Vittum, go to the internet and hook up with [Wine Country Classic Boats](#), then click on [2015 Fall Cruise](#). He's done a great job, through pictures and words, depicting all the fun their crews had while visiting our lake.



Smith Mountain Lake Chapter Antique & Classic Boat Society

Special Edition
November, 2015



“PAST PRESIDENTS”

Phil Cressman	1990-1992
Don Smith	1993-1997
Jim Gilbertson	1997-1999
Dan Holdgreve	1999-2001
Lars Okeson	2002-2004
Larry Tarves	2005-2006
Roger Smith	2007-2009
George Blosser	2010-2014



The
Winners



HELPFUL HINTS & INFO. YOU MAY NEVER NEED, BUT, IF YOU DO,...

(Submitted by Alan Frederick)

On Chris Craft Hercules "M" series engines, the 1" ID hose leading from the oil cooler to the back of the exhaust manifold requires making a tight right angle bend that always seems to give boaters a fit. If you use a straight pc. of hose, the area around the bend always kinks and will restrict the flow, so here's the solution. Head on down to your friendly auto supply store and order a molded hose from Gates (P/N 21029) which already has the proper bend in it so you just need to trim the ends to length and install. Problem solved!

On those rubber vane style water pumps, it's always a project to remove and install a new impeller. To extract, squirt full strength dishwasher liquid into the bronze housing after you've removed the outer wear plate. Touch the starter button so the impeller makes one revolution and it will slide out easily with pliers. To install a new one, soap up both the housing and the rubber impeller while hand rotating it in the proper direction and pushing it in place at the same time. It's always a good idea to remove the impeller(s) during winterization so the vanes are not set in a crushed position for months at a time.

And here's one more totally useless (or useful) tidbit of information. Ever wonder how much water you should have coming out of your wet exhaust system. Here's the formula for the recommended flow rate adequate to cool the system, especially if a flexible rubber hose is used in any portion:

Gallons of water per minute* =
$$\frac{\text{cubic inch displacement} \times \text{engine RPM}}{660,000}$$

Remember too that the exhaust pipe should run in a downward slope and that slope should be at least 1/2" for each foot of run.*

So in case you're at a loss for words and need a topic to jump start a conversation, try one of the above. You're bound to be the hit of the party!

Smith Mountain Lake Chapter Antique & Classic Boat Society

Special Edition
November, 2015



Thanks to all of you who helped with the Ship's Store.

Special thanks to Ginger, Rosalee, Joan & Nancy for being there all day.

We had a lot of fun and sold a lot of T-shirts, Hats, Posters, Pins and Christmas Ornaments.

Marlyn Curnow



Muffin
and
George
Smith

THANKS MUFFIN AND GEORGE



Smith Mountain Lake Chapter Antique & Classic Boat Society

Special Edition
November, 2015



Fall
"Share Your
Knowledge"
Workshop



President George Curnow
 540-488-2536
Email: gacurnow@gmail.com

NL Editor: Marlyn Curnow
 540-488-2617
Email:
 marlynquilts2@gmail.com